
Mater Atelier

Graphic Design Firm

INDE3000 Interior Design Studio 5
Corporate Interior Design: Final Presentation
Dec 15 2020
Submitted by: *Julienne Bernier, Brittany Dempsey,
Nguyen Huong Giang, Crystal Roy*
Submitted to: *Michael Guido*



Agenda

Welcome to Master Atelier	3
Reception	4
Boardroom	5
Accounting & Impromptu Areas	6
Major Offices	7
Workstations	8-9
Collaborative Workspaces	10
To Conclude	11

Welcome to Master Atelier



Classic Atelier



Artist's Canvas



Master Atelier is a studio respectful of the artistic process. Graphic designers are artistic problem solvers after all. Using visuals to communicate messages and concepts.

The atelier is the studio where they produce their problem-solving masterpiece, and the designers are the artists. Employees, clients, and visitors will feel and experience the atmosphere of an atelier from the rough unfinished appearance, scents and textures of the raw unfinished materials that make up the space. With a team-oriented philosophy there is no visual or physical hierarchy, just openness and uniformity.



Art studio



Green Wall



A Tour through the Atelier ~ Reception

When entering Master Atelier Graphic Design Firm, the first impression visitors will experience is the open concept feel of the space. With an over-sized reception and entrance that allows for easy mobility as well as navigation through the space.

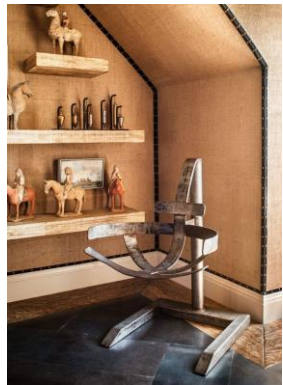
The reception has a symmetrical design, and the axis is balanced through the center line of the door through to the back on the reception.

The design balances cool and warm tones along with masculine and feminine elements. We believe mixing these detailed layers creates an engaging space for all visitors and clients to the office.

This space includes a sustainable wall treatment, and acoustics elements to absorb foot traffic reverberating off the concrete flooring and any ambient noise echoing in the open ceiling. The reception and entrance also introduce visitors to the colour palette carried throughout the office design.



Reception



Burlap Wall treatment



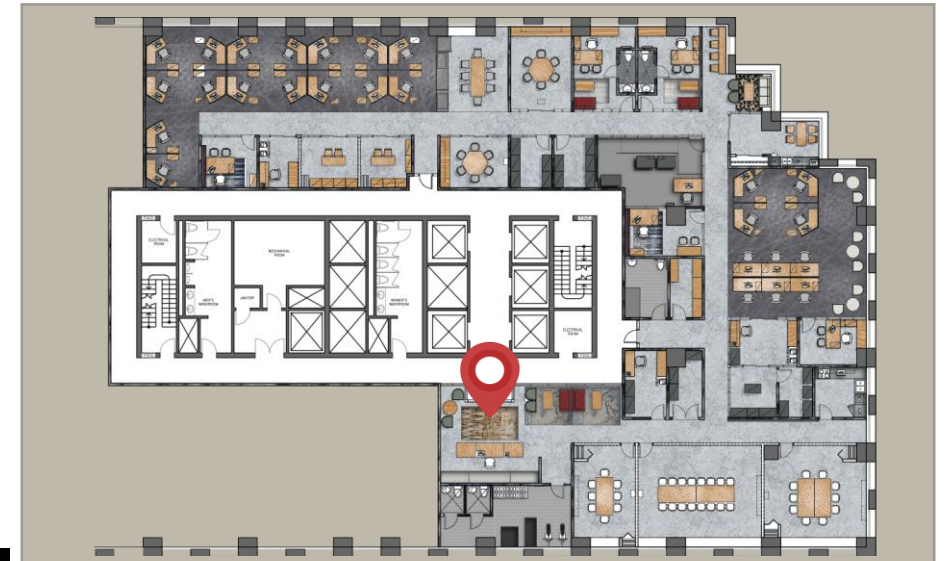
Acoustic Lighting



Entrance Rug



Feminine furniture



A Tour through the Atelier ~ Boardrooms

When clients enter the Master Atelier they are welcomed in the reception and while waiting they can see through the glass walls to the boardroom and two meeting rooms where clients and employees can gather to discuss projects.

The lighting blends with the raw black metal that frames the glazing.

The furniture is ergonomic for comfort and to enhance the wellbeing of all the guests. All the wood is sustainably sourced, and the moveable walls use 100% recycled fabric.

From the boardroom clients can see the Green wall feature which creates a calm atmosphere and enhances the air quality and wellness of the environment.



Boardroom



White-washed brick on exterior walls



Wood for conference table and millwork



Boardroom light



Meeting room light



A Tour through the Atelier ~Accounting & Impromptu Areas

The first open work area that we encounter is the **administration and accounting workstations**. The open concept allow employees to interact and cooperate with others around them. They are also near the management offices and resources such as the client records.

Throughout the office each of the exterior windows are equipped with sun shelves. The shelves help bring the sun light deeper into the offices.

Lighting throughout the office design is installed with daylight harvesting panels.

The workstations are of ergonomic design and allow for standing which improves the health and circulation systems of the body. Furthermore, the desk chairs are ergonomic for the best support possible and made from recycled materials.

To reduce the noise created in the space, we have used a carpet made of recycled materials. The carpet will help absorb the noise of employees meeting and help other concentrate on business.

Impromptu meeting areas have been integrated throughout the office.



Presentation Center



Coffee Table



Recycled Rug



Chair



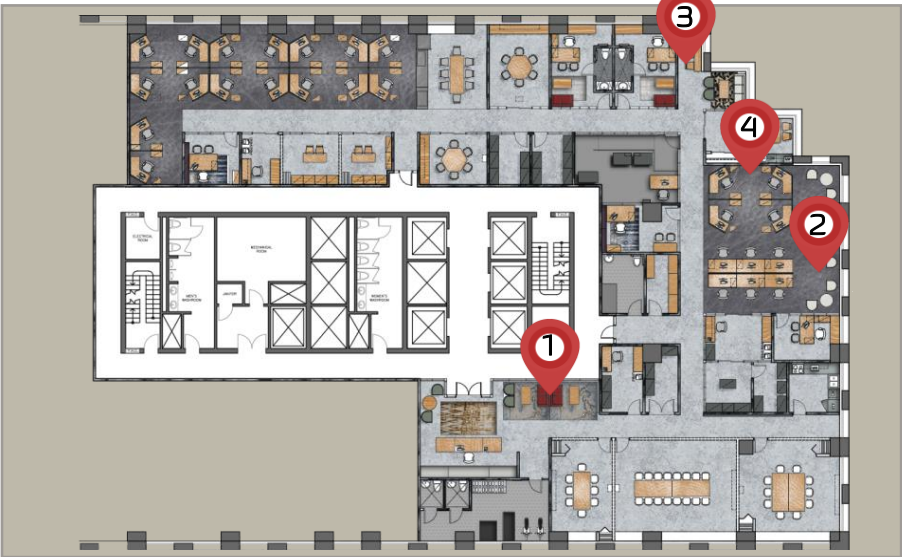
Executive workstation



Pedestal



Waiting Area - Reception



A Tour through the Atelier ~ Major Offices

There are two furniture system lines that's are main used for these offices: Mackinac desk system and West Elm Work Greenpoint Storage system.

1. **The Art Director office** receives sunlight directly from the North, because of the advantage of sun shelf bringing the light going through the design area to here. From here, the director can see a brief of the design area in overall.
2. **The IT Manger office** has a view to see directly through the Data Centre. The glass wall allows sun light comes through the impromptu meeting to light up all the equipment's here. They are positioned transparent as for the public to see.
3. As client's requirement, **Senior Partners workstations and Accountant's workstation** must be in U shape, so we create a combination of ergonomic desks, and chairs with West Elm Work Greenpoint Storage system all come from Steelcase, easy to install, repair, and sustain.



Art Director Office



Art Director Office



Shelf

Pedestal

Credenza

Desk

Lateral File Cabinet

A Tour through the Atelier ~ Workstations

When entering the design workspace, you feel a sense of calm with large exposed windows, open ceilings and a natural wood texture.

The workstations used flexible ergonomic furniture that is easy for employees to customize their own space and have possibilities for future growth. The workstations are at an angle to create a more fluid space that blends workstations into one cohesive community.

For this design area we chose to invest in a feature wood wall to add an up-lifting feature that will create a harmonious space that will create more productive employees.



Carpet Floor



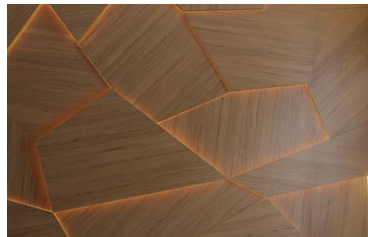
Concrete Floor



Design Area



Workstation chair



Feature wall inspiration



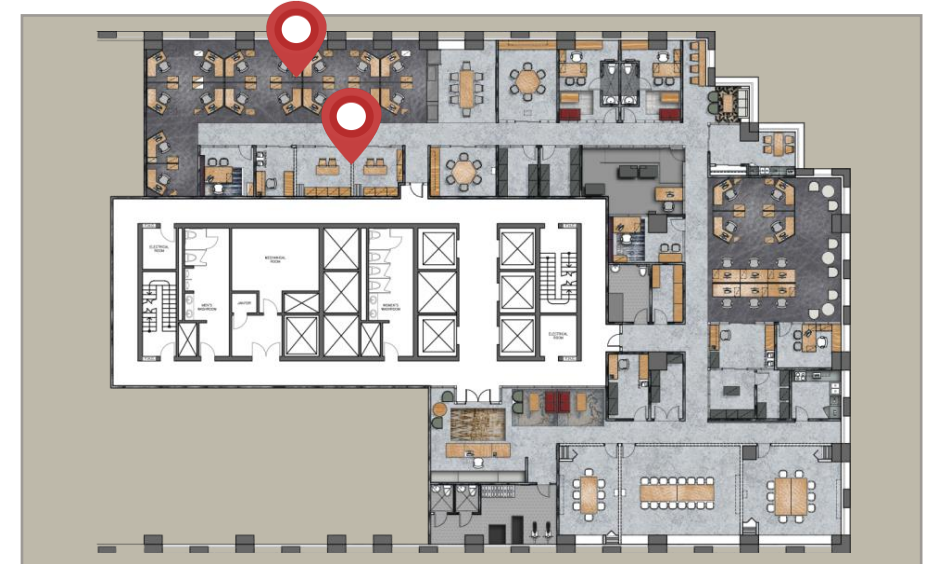
Feature Wall



Workstation table



Workstation setup



A Tour through the Atelier ~ Workstations

The design area is bright and creates an inspiring atmosphere with circular lighting in the hallway to create wayfinding for both employees and clients. The open ceiling is used to define the space and create an airy relaxing workspace.

We decided to add carpet in the open spaces to help with acoustics and offset the noise from the open ceilings.

Through the glass walls you can see into the resource library, technology centre and material to add create a connection for group work and inspiration for collaboration. The glass walls also ensure everyone has a view to enhance the wellness of the employees that will be using the spaces.



Design Area

Design Area

A Tour through the Atelier ~ Collaborative Workspaces

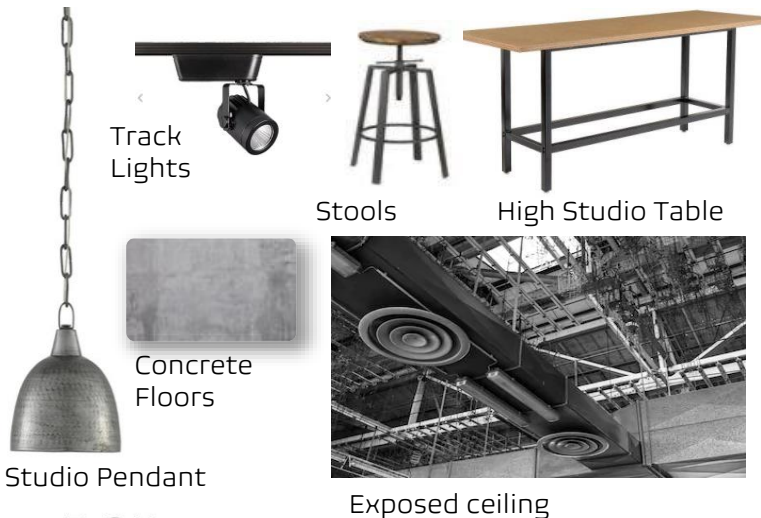
Collaborative spaces are essential in the Atelier. The studio and think tank are both designed to encourage the gathering of employees to work side by side, brainstorm, and bounce ideas off each other. While the studio promotes movement and hustle bustle of artistic creation, the think tank is a static meeting place to gather display designs on screen and discuss. The proximity of these rooms to the resource libraries, as well as the libraries moveable walls that can stay open as long as needed, allows artist to not become attached from the place that they manifest their ideas



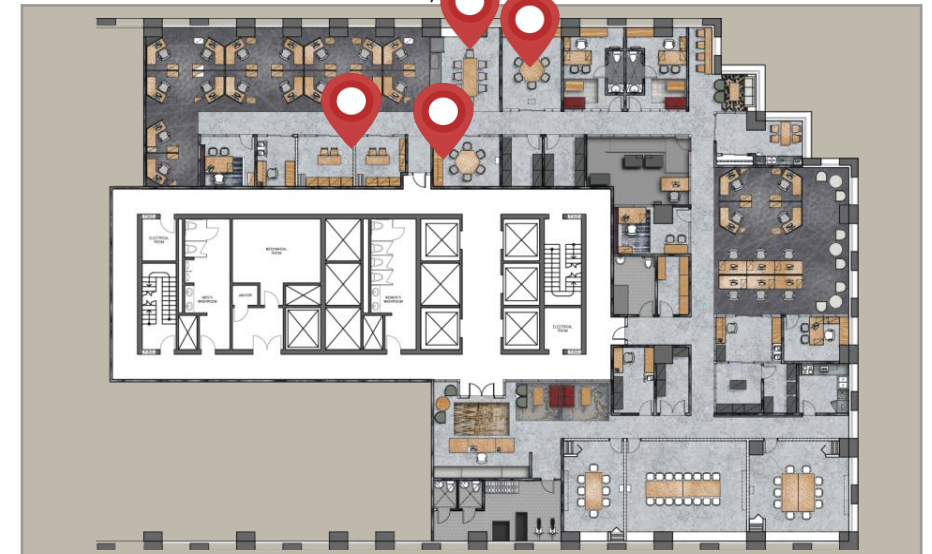
Inside Resource Materials



Resources Materials And Library



Resource Materials



To Conclude . . .



Reception



Design Area



The design of the Master Atelier Graphic Design Firm takes into consideration the health and wellbeing of its employees, care for the environment while remaining true the objective of creating an office space that is inspired by an artist's studio.

This design incorporates sustainable features for employees as well as for the environment. This is achieved through lighting, furniture materials and finishes, equipment for employees and the adaptable design of flexible spaces. Ambient noise is reduced to maintain a conducive work environment.

The open concept of the artist studio has been curated through open workspaces and the use of glass partitions. These elements allow for easy follow between individual and collaborative work. The colour scheme and texture used is another aspect of the design that mimics the artist's studio. The textures add dynamism to each of the spaces and as the colour of the surrounding are neutral the work of the designer are creating for clients can stand out and take center stage.



Thank You