

APOLLO'S BAR & LOUNGE

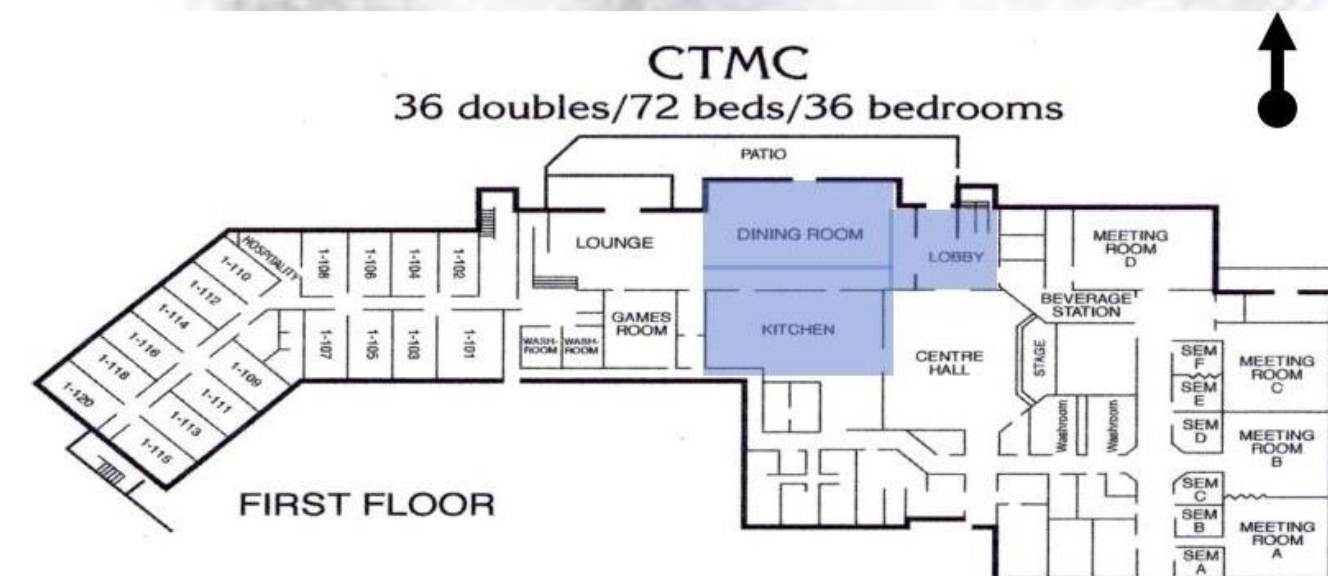
Client

The owners of the Kempenfelt Conference Center are interested in renovating the current building with onsite dining facility to serve as a catalyst for the revitalization of the Barrie area.

The future restaurant has to create a high-end dining experience that keeps residence coming back to the restaurant, and entices visitors from outside of Barrie to enjoy what the restaurant has to offer.



Areal View, Kempenfelt Conference Center Innisfil



Plan view, Scope of work

Barrie, Ontario

Based on the 2016 Canadian Census has a population of 141,434. At this time the average age was 38.5, this tells us that Barrie has a young population. With a younger demographic we can also consider ways of creating long lasting loyal customers as citizen age in place. Another important statics from the 2016 Census is the average income in Barrie is \$113,575. What we can infer from this information is that there is a large population in Barrie that can sustain a fine dining restaurant with disposable income. As Barrie continues to advertise itself as a commuter city, and if growth continues to increase, the potential for home grown customers will continue to grow.



Areal View, Downtown Barrie

Furthermore, Barrie attracts out of town visitors through its many city events that it holds year round as well as the businesses it hosts. Some of the top employers in the Simcoe Region include; schools boards, army bases, Georgian College, Royal Victoria Regional Health Center, Honda manufacturing and Casino Rama, and events that are put on by the city include; Winter Lights Display, Waterfront Festival, Kempenfelt Festival and the Hot Cocoa Trial. Both large employers and events attract people to the city of Barrie, as such developing a fine dining restaurant on the outskirts of Barrie will add to the attractions the city already has and showcases the beautiful scenery of the area.

Design Concept

Taking all this in mind the restaurant will focus on a connection to the surrounding land and the play between the masculine and the feminine energies of the Greek culture.

The food served will be primarily seafood themed as the Kempenfelt Conference Center is located close to a lake. And the design of the restaurant will center play on a juxtapositioning on soft feminine elements finishes with strong masculine angles and textures.



Femininity



Masculinity

The summer months offer an amazing opportunity for guest to enjoy a flow between the indoor/outdoor spaces with the floor to ceiling open doors and the extend that connection to nature fire pits will keep guest warm in spring and fall.



Outdoor Fire Pit

Greek Culture

As the building is close to the water front the design of the restaurant had to take advantage of the connection to nature that is offered at the building.

The Greek culture has an amazing connection with land. With emphasis on indoor-outdoor spaces and an amazing selection of dining options based on what the land offers, it was an ideal choice to base the cuisine of the future restaurant on.

APOLLO'S BAR & LOUNGE

Entry

As guests enter through the main lobby the reception can be found in the lobby or just after they enter the restaurant. There is also seating available in the lobby for those waiting, other diner guests or to be seated. As it is most people look and move right when they enter a space it was important to have the entrance here as when visitors look right they will see the water view. The guest seating has also taken the view into consideration. There are three levels to the restaurant so that more people can enjoy the view while dining.



Nana Wall, Open to Patio



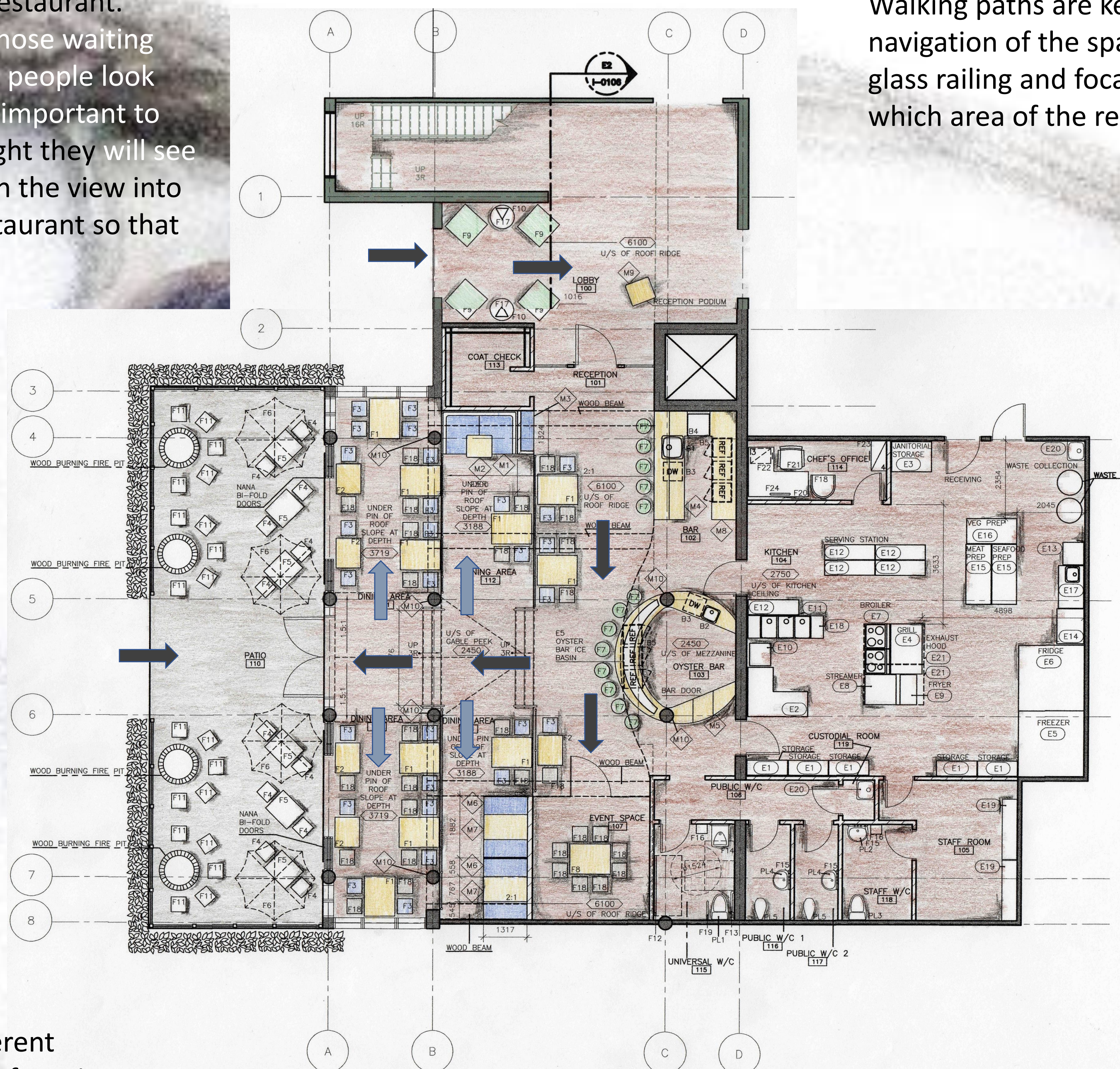
Large Wood Door Lobby Entry

Accessibility

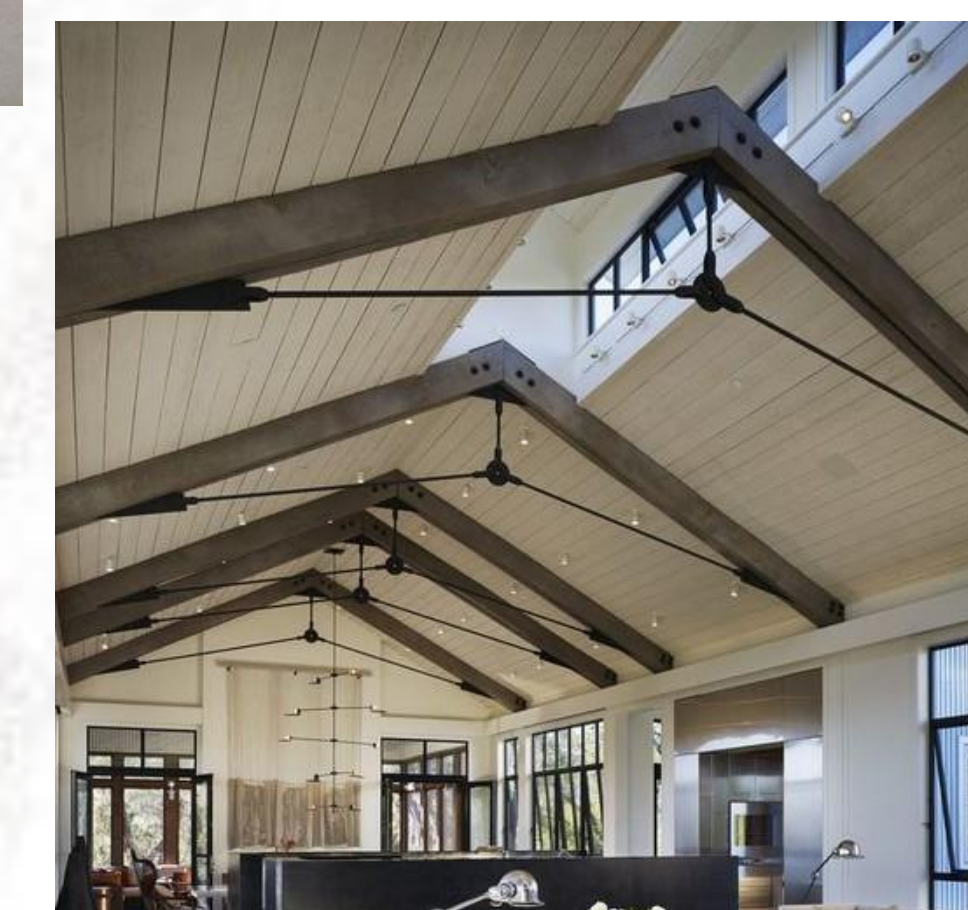
Guests with mobility issues have a few different seating options. They can take advantage of seating by the bar areas, and as that space is raised above the other dining areas will still have a view of the water. Or they can enter the dining areas from the patio and enjoy the seating and fresh air on the lower level and enjoy the indoor/outdoor connection from this vantage point.

Paths of Travel

Both guest and staff foot traffic has been taken into consideration when designing the layout for the dining areas. Walking paths are kept linear for easy movability, and navigation of the space for newcomers. With multiple levels, glass railing and focal point lighting, guests are able to find which area of the restaurant they're trying to find.



Stone Wall Inspiration



Wood beams to accentuate ceiling height

Kitchen

The paths of travel as also been a consideration in the kitchen. Servers enter the kitchen with dirty dishes and have access to the dish pit immediately to drop odd used dishes. They can continue to walk around the space leaving room for the chef's to work as they make their way to their pick up area. The chef's accessories and cooking essentials are in close vicinity so they don't have to cross another staff members working space.

APOLLO'S BAR & LOUNGE

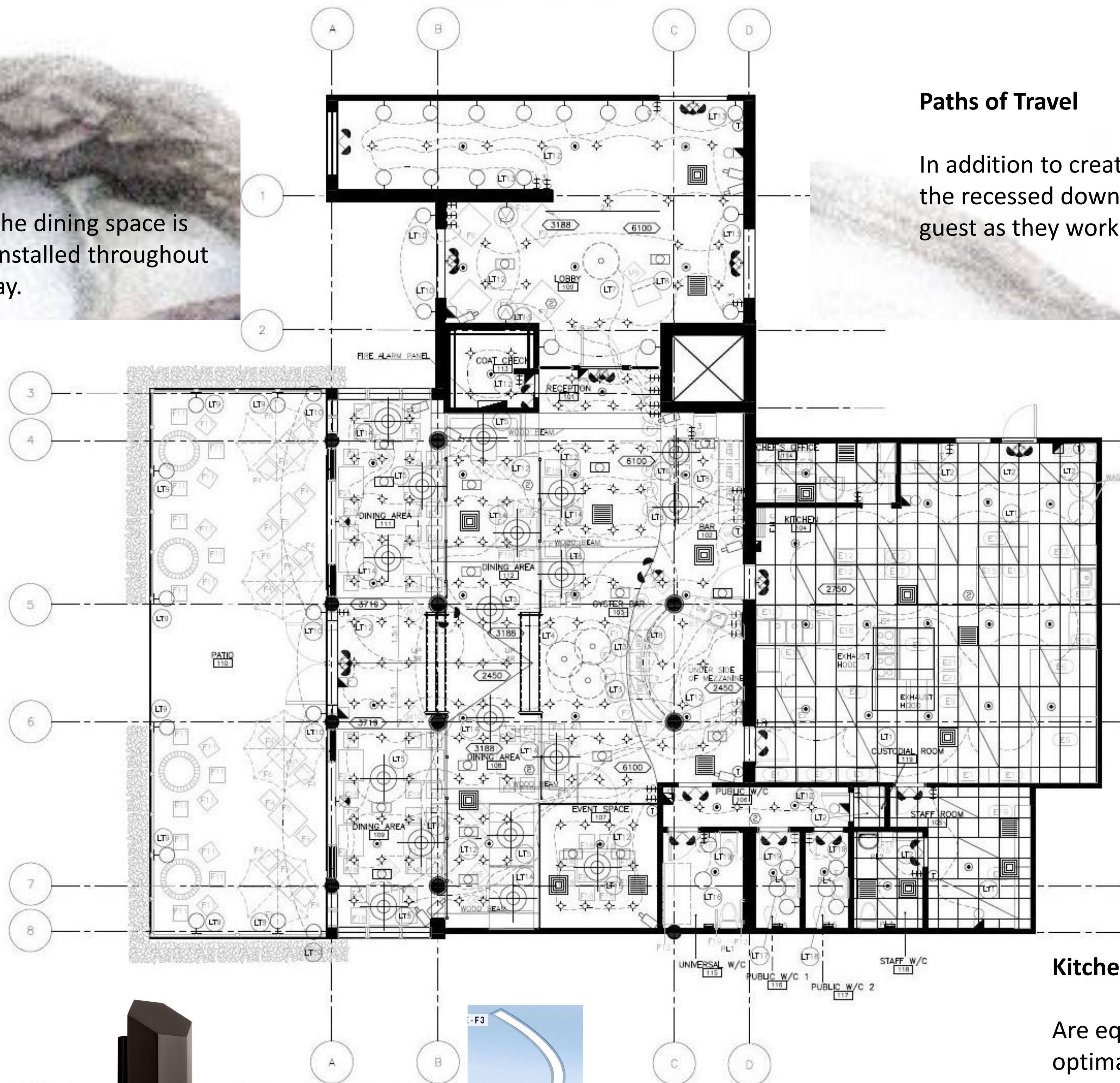
Reflected Ceiling Plan

Ambient

Ambient lighting is provided throughout the dining space is provided by recessed down lighting. It is installed throughout the lobby as well to create a safe entry way.

Paths of Travel

In addition to creating ambient lighting for the dining space, the recessed downlights also create a lit path of travel for guest as they work through the dining areas.



Dining Area Pendant



Dining Area Pendant



Bar Lighting



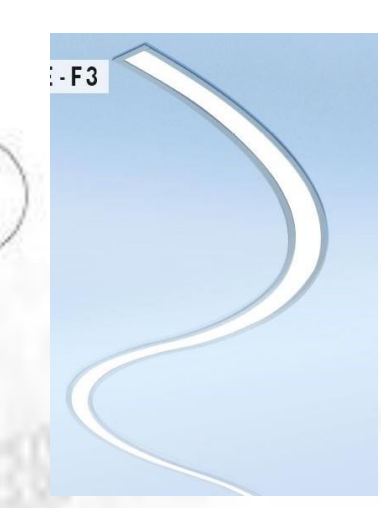
Event Space Lighting

Task Lighting

Pendant lights are above each table for easy readability, and to create an intimacy space for each dining party. Task lights are also used at the bar areas and reception for staff as well as along the stairs between dining levels and on the patio space for guest safety.



Patio Lighting



Column Lighting

Kitchen and Staff Rooms

Are equipped with a T-bar grid lighting system for optimal workability. The panels that are installed in the grid have acoustic absorbing fibers to reduce the amount of kitchen noise that enters the dining areas. As such the guests hear limited kitchen, dish and cooking noises as well as staff discussions.

APOLLO'S BAR & LOUNGE

Bar

The bar to the left of the entrance is intended for guests who are waiting for a table and for servers to pick up drinks for the guests they are serving. It is not a focal point of the restaurant as such the finishes aren't as extravagant as the ones found at the oyster bar. This bar has more masculine features, with reclaimed wood pendants and millwork, it has an industrial aspect to the finishes.



Bar, Undercounter Fridge



Bar, Wine Fridge

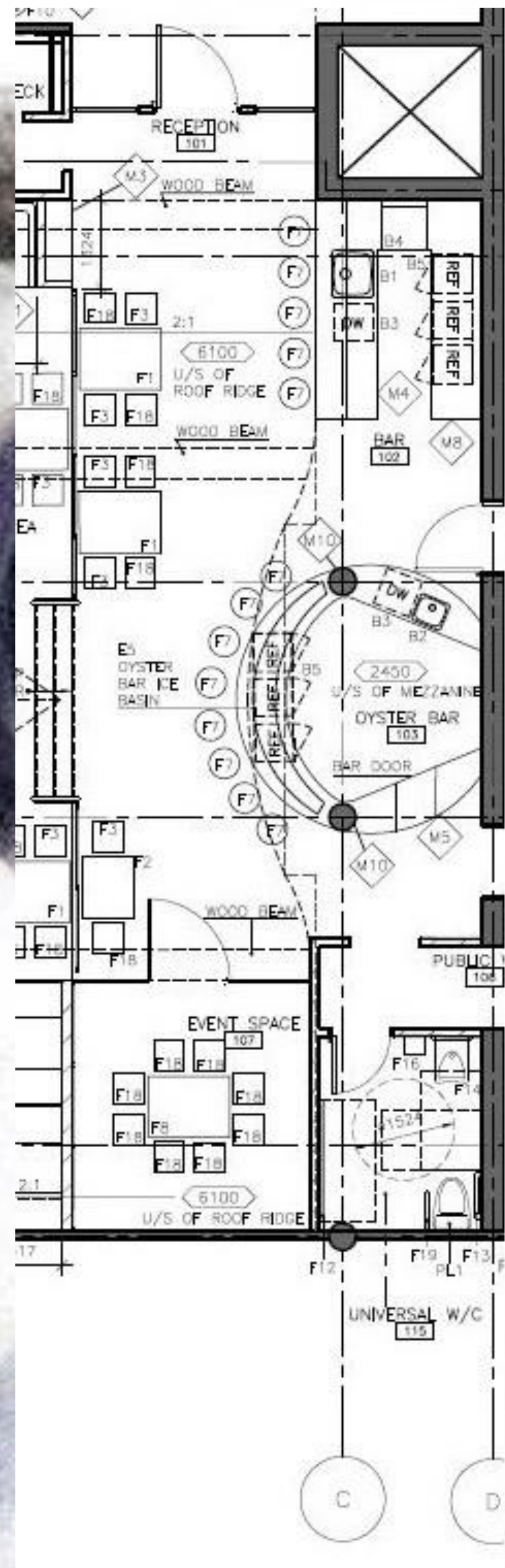
Oyster Bar

The oyster bar is the focal point of the restaurant, It is what guides guests into the space from both the lobby and patio. It also leads people through to the event space for private parties. It is a unique feature to this restaurant space as Barrie doesn't have any other high-end oyster bar options for it's residents and visitors. The finishes of the oyster bar are lighter in colour have more intricate tile work creating a more feminine area in the restaurant.



Oyster Bar Tile

Oyster Bar Backsplash Tile



Equipment

The equipment found in the kitchen focuses on dishes that require the preparation of fish dishes, including steamers and broilers. There is also a dedicated prep station for fish as not to contaminate the meat station in case of allergies.



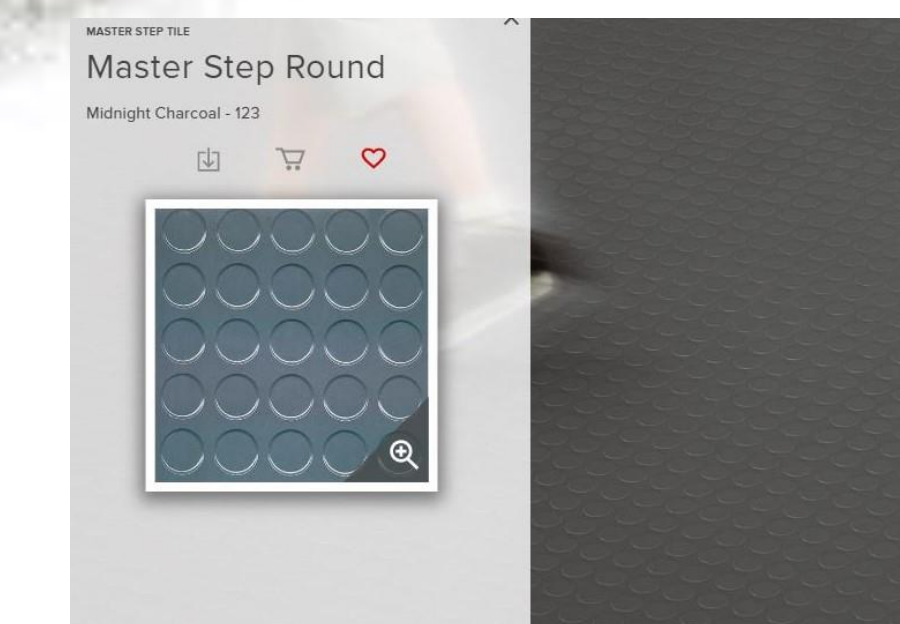
Gas Range



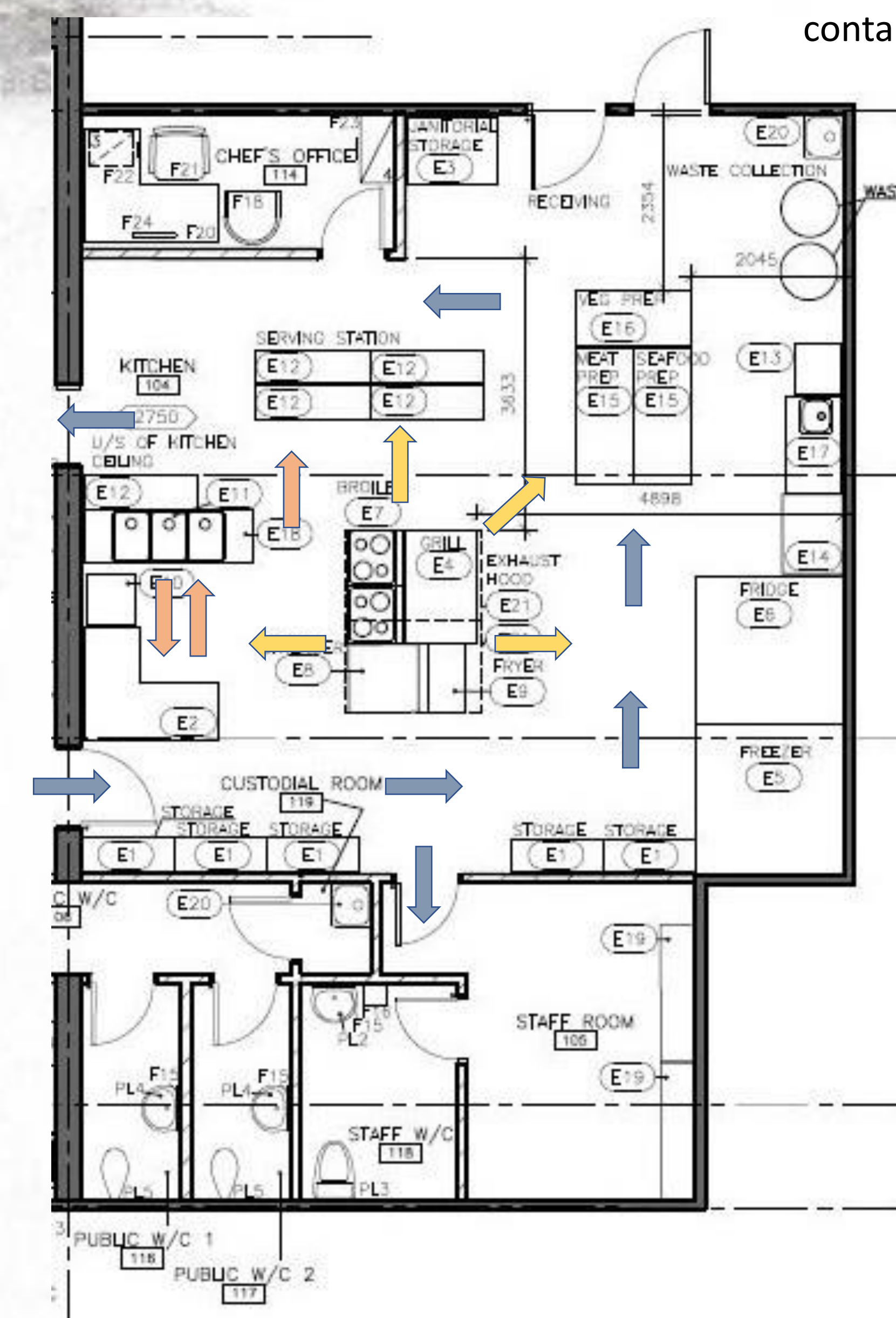
Steamer

Locations

The chef's office, storage, cooling units and cooking equipment have all been positioned for optimal foot traffic, reduce the amount of crossing other staff members areas and convenience.



Kitchen Flooring



Walk-in Fridge/Freeze

Fridge/Freeze

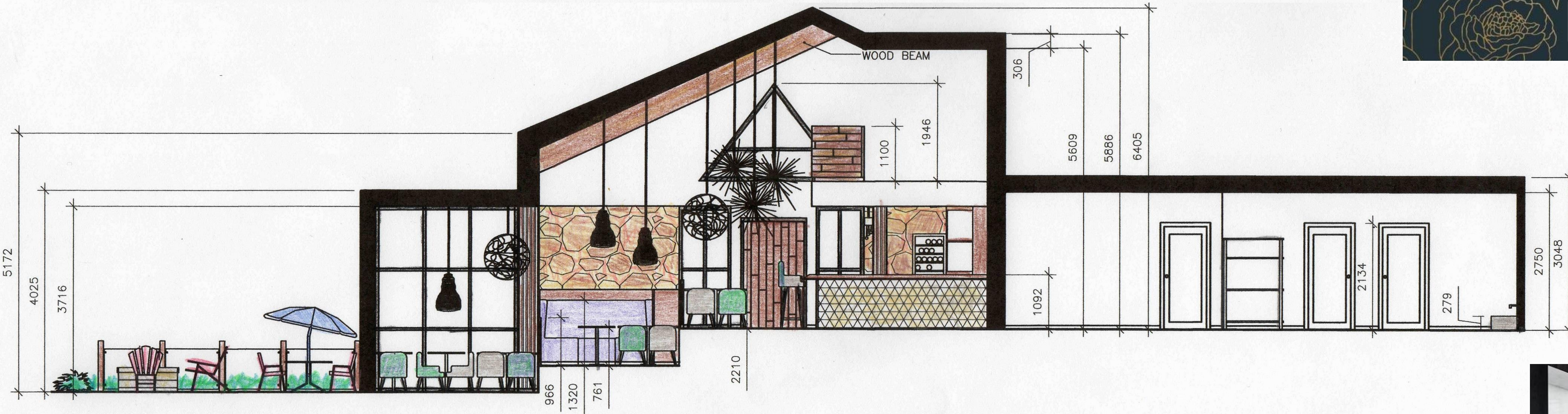
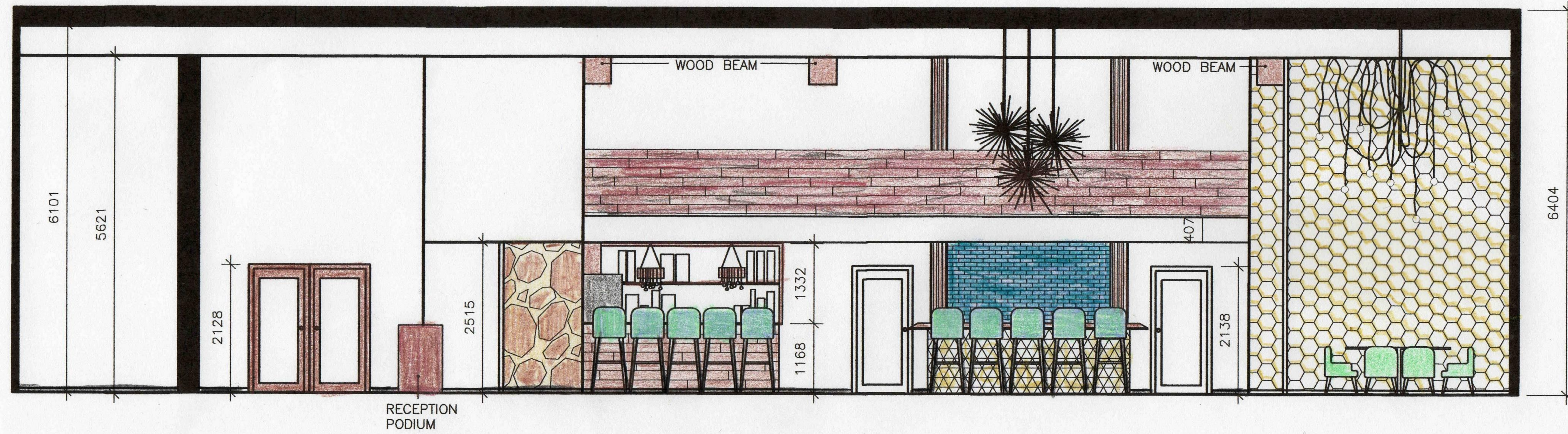
As the main dishes for the restaurant are primarily fish it was essential to have the best fridge and freeze available in order to maintain the integrity of what is being served.



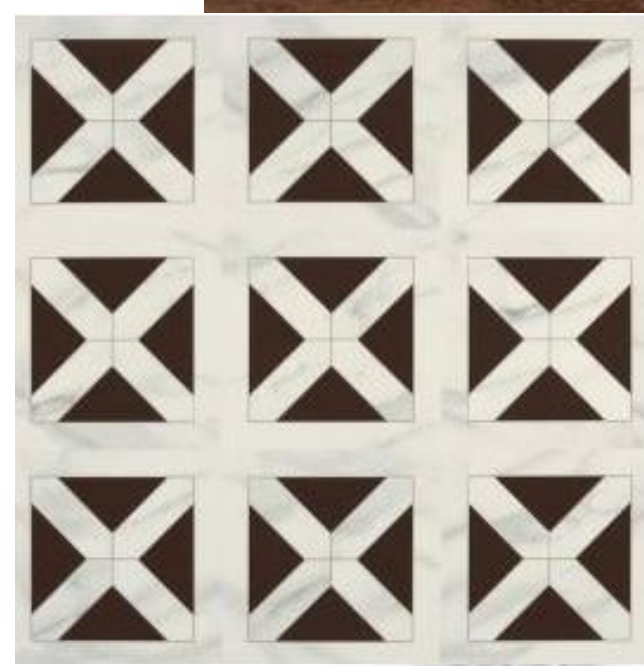
APOLLO'S BAR & LOUNGE



Lobby Furniture



Event Space Wall Coverings



Flooring Throughout Dining Area



Dining Chair



Dining Chair



Live Edge Table



Bar Stool



Oyster Bar Chandelier



Adult Change Table



Column Inspiration



Sink



Toilet



Wall Covering for Hall to Public W/C